

# DURDEN & HUNT

INTERNATIONAL



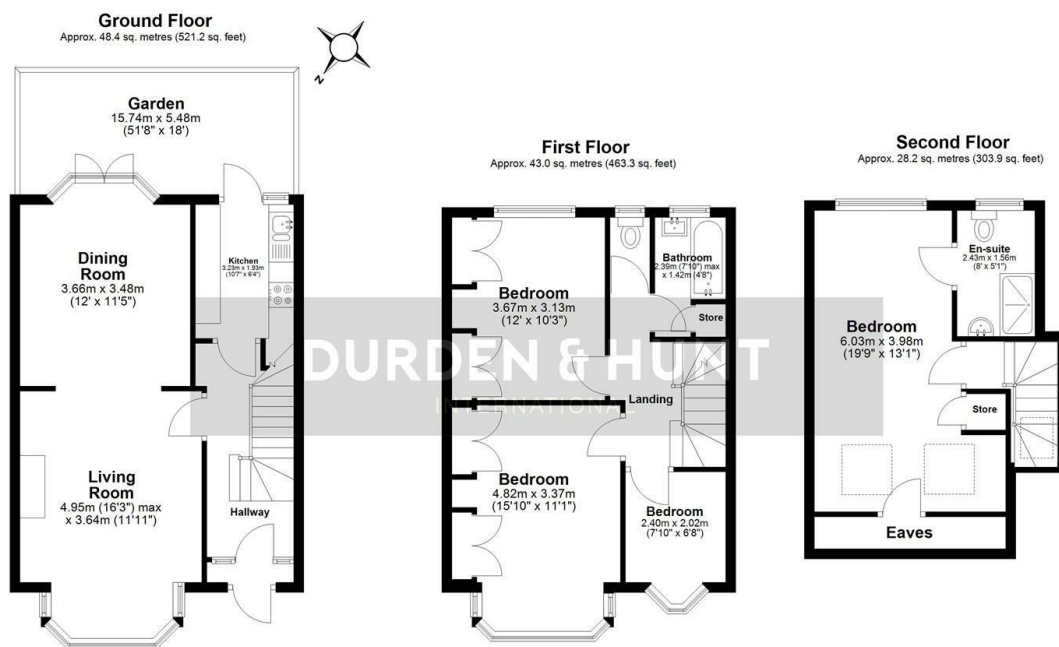
## Havering Gardens, Chadwell Heath RM6

Offers In Excess Of £550,000

- Off Road Parking
- Living And Dining Room
- Three Further Bedrooms
- Good Transport Links
- Galley Style Kitchen
- Family Bathroom
- Landscaped Garden
- Primary Bedroom With En Suite

159 High Street, Hornchurch, Essex, RM11 3YD  
01708 202 777

[hornchurch@durdenandhunt.co.uk](mailto:hornchurch@durdenandhunt.co.uk)  
<https://www.durdenandhunt.co.uk>

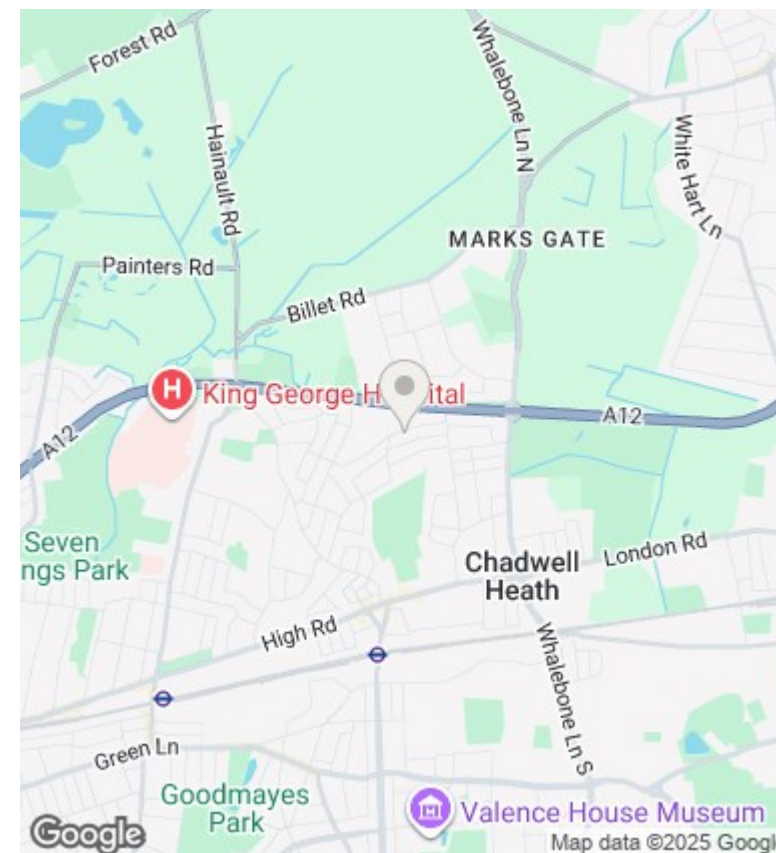


Total area: approx. 119.7 sq. metres (1288.5 sq. feet)

All measurements have been taken as a guide to prospective buyers only and are not precise. This plan is for illustrative purposes only and no responsibility for any error, omission or misstatement. The services, systems and appliances shown have not been tested and no guarantee as to their operability or efficiency can be given. Measurements may have been taken from the widest area and may include wardrobe/cupboard space. No guarantee is given to any measurements including total areas. Buyers are advised to take their own measurements.

© @modephoto.uk | www.modephoto.co.uk  
Plan produced using PlanUp.

**Havering Gardens**



## Viewings

Viewings by arrangement only. Call 01708 202 777 to make an appointment.

## Council Tax Band

D

## EPC Rating:

D

Energy Efficiency Rating		
	Current	Potential
Very energy efficient - lower running costs		
(92 plus) <b>A</b>		<b>84</b>
(81-91) <b>B</b>		
(69-80) <b>C</b>		<b>61</b>
(55-68) <b>D</b>		
(39-54) <b>E</b>		
(21-38) <b>F</b>		
(1-20) <b>G</b>		
Not energy efficient - higher running costs		
<b>England &amp; Wales</b>		EU Directive 2002/91/EC